



KONICA MINOLTA

MS6000 MKII

Dual output for scanning and printing: a simple front-button control lets you switch from PC scanning to laser printing, so you can quickly select the output you want for any microform image.

12" x 12" anti-glare screen provides a clear, detailed view of your microform.

High-resolution scanning: optical resolution of 600 dpi and selectable scanning density of 200, 300, 400, 600, and 800 gives you superior image quality for using microfilm information in websites, Email distribution and desktop publishing applications.

Auto imaging convenience with standard features like motorized image rotation, auto skew correction, prism lens, auto centering and auto frame masking; optional trimming and masking makes it easy to select and verify the exact scan area you want.

Digital image enhancement lets you correct density, contrast, resolution and sharpness – with zoom/magnification capability for hard-to-read areas.

Versatile interface: standard USB 2.0 or SCSI-2 connector and high-speed video connector for direct printing.

Full microform capabilities: Konica Minolta's array of interchangeable media carriers allow you to handle microfiche, jackets, aperture cards, 16mm and 35mm roll film, and 16mm cartridges.

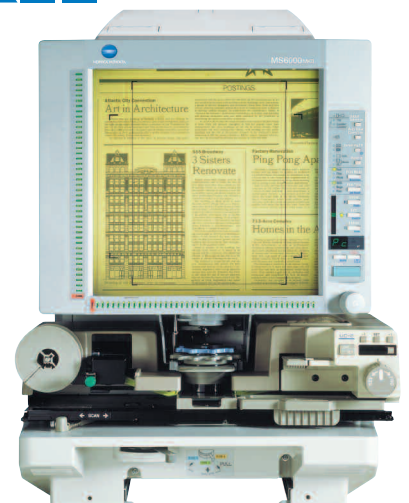
High-speed laser printers: choice of two optional laser printers gives you greater cost-efficiency, with stand-alone printer/scanner design for installation flexibility – and the ability of two scanners to share a single printer.

Recollect® software option lets you scan microfilmed documents with automatic OCR, organize and retrieve digital files, search by name, date, keyword or phrase – even locate information if words have been misspelled.

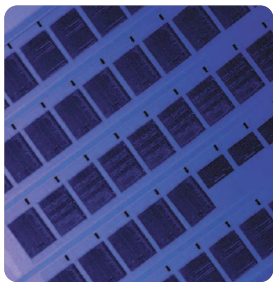


Digital Microform Scanner. High-resolution viewing, with auto imaging and optional trimming and masking. Dual scan and print output at a single touch. The ability to read on screen, print on paper, scan-to-PC. All at a cost you can afford.

MS6000 MKII



The essentials of imaging



MS6000 MKII

MS6000 MKII Specifications

TYPE:
Desktop Universal Digital Microform Scanner

TYPE OF FILM:
Microfiche, jackets, aperture cards
16mm & 35mm roll film
16mm film cartridges

SCREEN SIZE:
12" x 12" (300 x 300mm)

MAGNIFICATIONS:
75x, 9 - 16x, 13 - 27x, 23 - 50x

FOCUS CONTROL:
Manual

IMAGE ROTATION:
Prism rotation (auto: prism lens included)
Carrier rotation (fiche carrier)

ZOOMING:
Manual

SCANNING METHOD:
CCD

SCANNING SPEED:
6.5 seconds per page, 400 dpi
5.5 seconds per page continuous print, 400 dpi

SCANNING DENSITY:
200, 300, 400, 600 dpi
800 dpi PC Mode

OPTICAL RESOLUTION:
600 dpi

ELECTRONIC ZOOMING:
50% - 200%, Direct Print

MULTIPLE PRINTING:
1 - 19 prints (LED countdown identification)
(with MSP3000 or MSP2000 printer)

HARDWARE INTERFACE:
Video (direct print) to MSP3000 or MSP2000 Printer
USB 2.0 or SCSI-2 (to PC optional, switchable on front panel)

EXPOSURE:
Auto, Manual

SCANNING FEATURES:
Auto Centering
Auto Frame Masking
Auto Image Rotation
Auto Skew Correction
Date Stamp (with printer)
Footswitch Support (optional)
Front-Panel Scanning ("push" scanning)
Grayscale Support (optional)
Manual Masking (trimming & masking; optional)

HALOGEN LAMP:
20 V, 150 W

POWER REQUIREMENTS:
AC 120 V, 60 Hz

POWER CONSUMPTION:
350 W

DIMENSIONS (W x D x H):
19-3/4" x 32-3/8" x 28-1/4"
(503 x 821 x 716mm)

WEIGHT:
92 lbs. (42kg)

OPTIONS:
Grayscale Kit (256 levels, 8-bit output to PC)
MSP3000 Digital Laser Printer
MSP2000 Digital Laser Printer
Footswitch
Lenses (same as for MicroSP2000, MS2000, RP603Z, and RP605Z)
Fiche Carrier 5
Universal Carrier UC-2
Universal Carrier UC-5
Universal Carrier UC-6E
Universal Carrier UC-7
Roll Film Carrier 9B
Roll Film Carrier 11
Roll Film Carrier 15 A/M
Roll Film Carrier 21
Roll Film Carrier 22A
Manual Frame Masking Kit
MARS Controller 4
MARS Mini Controller 2
Workstations
Energy Star Kit
Recollect® Software
MicroDAX® Software
USB 2.0 Interface Kit (Counter Kit)

Optional Workstation:
with over/under design for space-saving installation; holds MS6000 MKII Scanner above, MSP3000 Laser Printer below.



MSP3000 Laser Printer:
high-resolution output at up to 20 ppm, with optional large paper capacity of 1,150 sheets and first-copy output in just 13 seconds.



MSP3000 Printer Specifications

PRINTING METHOD:
Laser Electrostatic

DEVELOPING SYSTEM:
Micro-Toning

PRINT RESOLUTION:
400, 600 dpi

OUTPUT SPEED:
20 sheets per minute (8-1/2" x 11" or A4, 400 dpi)

FIRST PRINT SPEED:
13 seconds (8-1/2" x 11" or A4; landscape)

PRINT SIZE:
8-1/2" x 11" (A4, landscape)
8-1/2" x 11" (A4, portrait)
8-1/2" x 14" (B4, landscape)
11" x 17" (A3, portrait)

PAPER SUPPLY:
150-sheet universal paper tray
250-sheet universal cassette
500-sheet letter-size cassette (optional)
Third paper tray with 250-sheet universal tray (optional)

MAXIMUM PAPER CAPACITY:
1,150 sheets

WARM-UP TIME:
Less than 70 seconds

POWER REQUIREMENTS:
AC 120 V, 60 Hz

POWER CONSUMPTION:
750 W

DIMENSIONS (W x D x H):
22" x 20-1/2" x 16"
(561 x 521 x 409mm)

WEIGHT:
61 lbs. 12 oz. (28kg)
(including imaging cartridge)

MSP2000 Laser Printer:
cost-effective laser printing for any application, with 8 ppm output, 250-sheet capacity, first copy in 19 seconds.



MSP2000 Printer Specifications

PRINTING METHOD:
Laser Electrostatic

DEVELOPING SYSTEM:
Micro-Toning

PRINT RESOLUTION:
400 dpi

OUTPUT SPEED:
8 sheets per minute (8-1/2" x 11" or A4, 400 dpi)

FIRST PRINT SPEED:
19 seconds (8-1/2" x 11" or A4; landscape)

PRINT SIZE:
8-1/2" x 11" (A4, landscape)

PAPER SUPPLY:
250-sheet multi-purpose paper tray
Manual feeding (1 sheet at a time)

MAXIMUM PAPER CAPACITY:
250 sheets

WARM-UP TIME:
Less than 20 seconds

POWER REQUIREMENTS:
AC 120 V, 60 Hz

POWER CONSUMPTION:
580 W or less

DIMENSIONS (W x D x H):
15-1/2" x 11-3/8" x 9-2/3"
(without face-up tray)
(394 x 446 x 327mm)

WEIGHT:
15 lbs. 7 oz. (7kg)
(without toner cartridge)
Drum cartridge weight: approx. 0.66 lbs. (0.3kg)
Toner cartridge weight: approx. 1.1 lbs. (0.5kg)



© 2005 KONICA MINOLTA BUSINESS SOLUTIONS U.S.A., INC. All rights reserved. Reproduction in whole or in part without written permission is prohibited. Konica Minolta and The essentials of imaging are trademarks of KONICA MINOLTA HOLDINGS, INC. Recollect is a registered trademark of Rebus Technology. MicroDAX is a registered trademark of Versalmage Software Corporation. All other brands and product names are registered trademarks or trademarks of their respective owners

Design & specifications are subject to change without notice.

*Some functions may require options, which may or may not be available at time of launch.

MS6000 MKII



KONICA MINOLTA

KONICA MINOLTA BUSINESS SOLUTIONS U.S.A., INC.

100 Williams Drive
Ramsey, NJ 07446

www.kmbs.konicaminolta.us

Item #: MS6000MKIIS